

Saint Lawrence Catholic Church

120 N. Gatewood Street, Lawrenceburg, KY 40342

February 7 - February 8, 2026
5th Sunday of Ordinary Time

As Catholic disciples of Jesus Christ and His Church, we respond to our Lord's Invitation to be faithful in prayer, celebrate the Sacraments, deepen our faith through lifelong formation, serve those in need, and invite others to the fullness of the Catholic faith.

St. Lawrence Welcomes

Welcome! We are glad you are here to worship with us. Whether you are a cradle Catholic, or this is your first time at a Catholic Mass; whether you are a lifelong member of St. Lawrence or a visitor to our parish we are blessed by your presence. If you are new to our parish or a visitor, be sure to introduce yourself to Fr. Steve on your way out of Mass.

If you are interested in joining our parish, or have questions about the Catholic Church and St Lawrence parish, mention it to Father Steve and call 502-839-6381 or email us at stlawrencenews@cdlex.org



Weekday Mass

Tuesday: 6:00pm

Wednesday 8:30am

Thursday: 8:30am

Friday: 11:30am

Weekend Mass

Saturday Vigil: 5:30pm

Sunday: 9:30am

Sunday 6:30pm (Spanish)

Holy Day Masses

6:00pm Vigil the evening before

11:30am Day of Obligation

Adoration

Wednesday 9:00am - 8:00pm

Benediction 8:00pm

Reconciliation

Saturday: 4:45 - 5:15pm

Sunday: 8:45 - 9:15am

or by appointment

St. Lawrence Connects

Live stream Sunday Mass on YouTube, Facebook, FM 76

stlawrencenews@cdlex.org

www.saintlawrencecatholicchurch.org

Look for us on Facebook!

To sign up on Flocknote Text STLAWKY to 82546 to join.

On Flocknote at <https://stlawrencecatholicchurch4.flocknote.com>

How Can We Help You?

Fr. Steve Roberts MD, STL
Priest/Pastor
sroberts@cdlex.org

Dcn. Frank Villalobos
Deacon
fvillalobos@cdlex.org

Anna Courtney
Business Office Mgr.
acourtney@cdlex.org

Ashley Trautner
Administrative Assistant
stlawrencenews@cdlex.org

For all regular inquiries including
registering for CCD, prayer requests,
appointments with Fr. Steve call
502-839-6381 ext. 5

**For Sacramental
Emergencies ext. 1**

Office hours: Monday-Thursday 9:00am-3:00pm

St Lawrence This Week

February 8- February 14, 2026

Sunday, February 8 8:45am Reconciliation 9:30am Mass 10:30am Sunday Social 11:00am Adult Sunday School, CCD, OCIA 6:30pm Spanish Mass	Monday, February 9
Tuesday, February 10 4pm St Barnabas- Blandford Hall 6:00pm Mass 6:30pm Choir 7pm- Anderson United Blandford Hall	Wednesday, February 11 8:30am Mass 9am–8:00pm Adoration 5:00pm Dinner & A Movie-FLC 8:00pm Benediction
Thursday, February 12 8:30am Mass 6:30pm Liturgy committee	Friday, February 13 11:30am Mass 6:30pm Youth Group-FLC
Saturday, February 14 4:45pm Reconciliation 5:30pm Mass	Live stream Sundays on YouTube, Facebook., FM 76 More events at: www.saintlawrencecatholicchurch.org/news

Please remember to bring your palms in by Feb 15th so they may be used for Ash Wednesday. There will be a vase located in the narthex for you to place them in.

ASH WEDNESDAY



FEBRUARY 18TH

MASS: 11:30 AM
6:00 PM

*Ash Wednesday marks the beginning of Lent. It is not a holy day of obligation. However it is a day of **fasting** (1 full meal & 2 small meals allowed) and **abstinence** (from meat). The prayers and sacrifice of the Mass will spiritually strengthen you for the physical burden of a day of self denial through fasting.*

Lenten Penance Service

MARCH 11TH
6:30 PM

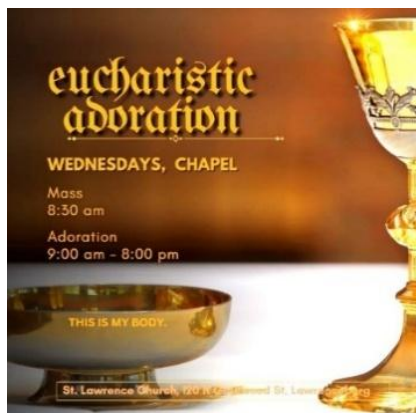
St Lawrence Worships

Mass Intentions

Saturday	February	7	† Ruth Booth
Sunday	February	8	Parishioners of St Lawrence
Sunday	February	8	† Souls of Purgatory
Tuesday	February	10	† Bob Hite
Wednesday	February	11	Pope Leo XIV (i)
Thursday	February	12	† Mike Timmerman
Friday	February	13	† Sandy Sloan

Liturgical Ministers

Date	Time	Sacristan	EMOHC	Lectors	Greeters	Altar Server	Musicians
Feb 7	5:30pm	Sally	Mary C	Anne & Annette	Lisa & Brenda	Mica, Uriah & Quartes	
Feb 8	9:30am	Robin	Christine & John C	Marcia & Tina	Jeanette & Bill	Jordan, Zeke, Connor & Sarah	Libby/
8 de Feb	6:30pm						
Feb 14	5:30pm	Gail B	Gail & Sue	Anne & Annette	Gail & Lisa	Mena & Lexi	
Feb 15	9:30am	John S	Anita & Robin	Carolina & Diana	Dave & Denis	Alex, Axel & Mario	Libby/Bill
15 de Feb	6:30pm						



Adoration
Wednesday from
9am to 8pm in the
chapel. Benediction
at 8pm.



Scan for this week's
Mass readings

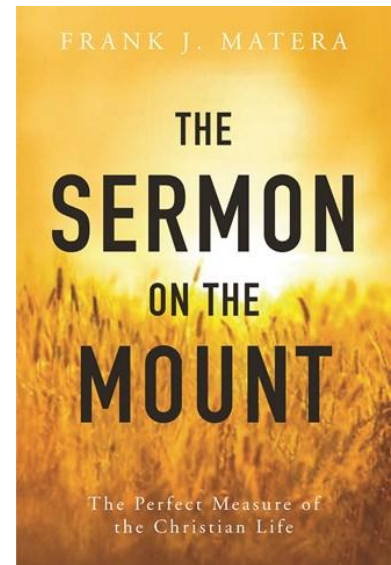
St Lawrence Formation

Youth Group meets on Fridays from 6-8pm. Come join us for fun, formation, friendship and activities in the Family Life Center. Text STLAUYOUTH to 84576 to join. The Youth Group enjoy many activities throughout the year. Schedules are available in the narthex.

CCD Classes have resumed at 11am in Gabriel Hall classrooms. **2027 Confirmation class** has begun and will join the High School group to start.

OCIA (Order of Christian Initiation Adults) meets at 11am on in Gabriel Hall conference room. If you are interested in becoming Catholic, this is the program for you. Registration and information will begin this year's formation. This program is for adults 18 years and older.

Adult Sunday School meets this week. **The most important 2000 words ever spoken or written, Jesus' Sermon on the Mount.** We begin our new book *The Sermon on the Mount* by Frank Matera. Saint Augustine once described the Sermon on the Mount as "the perfect measure of the Christian life." Taking his cue from Augustine, Frank Matera provides an exposition of the sermon for contemporary readers who wish to use the sermon as the standard by which they live their lives every day. Join us on Sunday at 11 am as we explore this amazing book.



St Lawrence Reading Scripture

The Psalms and the Songs of Ascent

During the season of Lent, we'll be reading the scriptures together through Bishop Barron's book *Lenten Gospel Reflections*. And so, in the 17 days of February before Lent begins, we as a parish will prepare for that season of fasting, prayer, and almsgiving by reading from the psalms, specifically from the "Songs of Ascent". Below is an introduction to these psalms and a suggested reading schedule

Introduction to the Book of Psalms

The Book of Psalms is a collection of prayers, poems, and songs. More than just a kind of hymnal, the psalms cover the full experience of what it means to be the people of God. Many of the psalms are songs of praise and thanksgiving. However, just as many are poems of deep sorrow and worry, some even questioning if God cares about us at all. No matter what emotion you're feeling, struggle you're dealing with, or reason you have to be thankful, there is a psalm for you! Of the 150 psalms, King David is attributed with having written 73 of them. Asaph (a Levite and musician who served at the time of David) is said to have written 12 more, and the "Sons of Korah" (the descendants of a different Levite and poet) are given credit for 11. There are a few other authors mentioned here and there, but the rest are mostly anonymous.

The Book of Psalms as we have it in our Bible is itself divided into 5 smaller books, each of which end with the line "Blessed be the Lord, the God of Israel, forever". Many scholars and theologians have proposed different reasons for why the psalms are grouped together as they are, and there's not enough space in a bulletin to go through each of those, but the important part is that these have not

been haphazardly thrown together. The Psalms are carefully organized to lead us through the ups and downs of the life of faith.

One thing that most people agree on, however, is that Psalms 1 and 2 serve as an introduction for the themes that will be found across the rest of the psalms, which is why we'll start with those ourselves before moving on to the Songs of Ascent.

The Songs of Ascent

Psalms 120-134 are collectively known as “The Songs of Ascent”. At risk of oversimplifying them, these 15 psalms are songs of pilgrimage. At some points they would be sung as pilgrims climb Mt. Zion as they approached the temple, at others they would be sung as pilgrims climb the steps into whatever church or Cathedral they were visiting. But in any case, the 15 psalms together tell the story of a people who are in deep distress, crying out to the Lord for deliverance, and then slowly, psalm by psalm, coming to see the faithfulness of the Lord in coming to rescue them. The Songs of Ascent begin with Psalm 120 crying out, “In my distress I cry to the Lord!”. Over the course of the songs, the author will express hope that God has been faithful before, and will surely be faithful again, only to just as quickly turn back to tears, wondering how long they must wait for salvation. But in the end, God comes through for us, as he always does, with psalm 134 shouting “Come, bless the Lord, all you servants of then Lord!”.

They are the poems of people who know that only God can save them. They are poems that begin in a place of despair, and end in a place of glory. And I can think of no better way to prepare for a full and meaningful Lent than to spend days leading up to Ash Wednesday praying these psalms together as a parish.

Suggested Reading Schedule for February

Date	Psalms	Topic
Sunday, February 1, 2026	1	The Ways of God and the Wicked
Monday, February 2, 2026	2	A Promise to God's People
Tuesday, February 3, 2026	120	Prayer for Deliverance
Wednesday, February 4, 2026	121	Assurance of God's Help
Thursday, February 5, 2026	122	Praise for Jerusalem
Friday, February 6, 2026	123	Prayer for Mercy
Saturday, February 7, 2026	124	Our Help is the Lord
Sunday, February 8, 2026	125	Trust in the Lord
Monday, February 9, 2026	126	Sow in Tears, Reap in Joy
Tuesday, February 10, 2026	127	The Blessed Family
Wednesday, February 11, 2026	128	The Happy Home
Thursday, February 12, 2026	129	Deliverance from Enemies
Friday, February 13, 2026	130	Waiting on the Lord
Saturday, February 14, 2026	131	Rest in the Lord
Sunday, February 15, 2026	132	God Dwells with us Forever
Monday, February 16, 2026	133	The Blessings of Peace and Unity
Tuesday, February 17, 2026	134	The Lord Blesses his Servants

St Lawrence Prays

For Those in Need

Parishioners: Tina Akers, Jim Bach, Tommy Brown, Dr. Glyn Caldwell, Terry & Charlene Cherry, Rosalie Covello, Bob Crane, Lupita Molina Del Porte, Terry Elder, Shirley Eldridge, Joe Feribach, David Foye, Iran Garcia, Frank Goin, Kendall Harper, Betty Hettinger, Donna House, Traudi Killinen, Martin Mattingly, Mary Medlar, Walter Metcalf, Rose Miller, Tammy Mileer, Kathy Mirilovich, Shirley Norris, Sandra & Neil Nucci, Laura Obertal, Dick & Carol Pohlman, Mark Salazar, Maria Sepulveda, Sepulveda Family, Ellen Silvernail, Bob Simon, Ron Stohr, Nadine Thompson

Family & Friends: Andrew Basham (R Basham), Shirley Durr; Michael Caldwell (G. Caldwell); Barbara Cann, (L. Cann); Ann Cheak (J Cheak), Kenny Blair (P. Crane); David Connelly (L. Connelly), Bryan Courtney; Deacon Richard Abbey (A. Courtney); Dana Dahlen (B Dahlen), Kathleen & Carl Riestler, Susan & John Nelson, Nick Doyle, Erica, John & James Nelson, Ryan Bickell (A. Dull); Suzanne Speight, Sharon Hirschman, Jeff Ryan, V, Cammie Marshall, Paula Henderson (A Goin); Loretta and Shelby Newton (Libby H); Sean House (D.House), Naomi Collins (Denis K); Alli Johnson (Jo J); Bonnie Clements; Dale Lowe, (S. Litkenhus); Joseph Caudill, Francis Wheatly (L Mattingly); Joel Hardin (Y Maddux); Benny Young, Marguerite Wordell, Gayle & John Roth (P. Marraccini); Cathy Campbell (M. Medlar), Mark Metcalf (W. Metcalf); Houghland Family, (K. Mirilovich); Ann Simpson (A. Pike); Cynthia & Alan McMillen, Susie & Bob Schutz, Jeff & Iva Warren, Roy Tomey, Michelle Scott (M. Roark); Marianne Christi, Dan Groth, , Heather Griffin, (S. Rue); Jim Reid (Fr. Steve); Jacen Hoyt (J. Stohr); Pam Hall, Gary Briscoe, Larry Slone (B. Sloan); Joy Bozorgzad, Lavolia Snell, Becky Vaughn, (S Sloan); Shawna Timmerman, Don Hart, Machell Adams (MJ Timmerman); Mike Rakestraw, Carolyn Rakestraw, Mary Margret Mattingly, (J. Thompson); Martha Clark, Lou Ann Clark, (N Thompson); Vidalina Mojica, Angelina Bermudez, Jose Bermudez (G. Twohig); Douglas Wade Jr. (J. Wade); Michael Wallace (T Wallace), Karen Scott (A Wireman), Carolyn & Ralph Booth (M. Yeager)

Those who serve our country: Shane Carey, Alex Crane, Hugh Devane, Konner Larson, David Lanier Jr., Colt Litkenhus, Mike LoSchiavo Jr., Travis Nicolette, Kristin Palmgren, Bill Redding, Clayton Riddle, Colin Roark, Todd Rucker, Matthew Spencer

For the intentions in our hearts and for all those suffering

St. Lawrence Gives

Date	Attendance	Tithe	Amount
Saturday	44	Offertory	No Count
Sunday	142	Building	This Week
Domingo	34	Churches of Latin America	

General Offertory Funds are used to support the day-to-day operational expenses such as office supplies, printing, church supplies, payroll, and utilities. **Building Fund collections** goes towards

facility upkeep and maintenance. **Poor Fund collections** go to help some of our parishioners with financial difficulties as well as the LIGHT Center, LUMC Diaper Bank, and Anderson United. The diocese will have **second collections** for specific needs of the Catholic Church and its mission work.

St. Lawrence Serves

Open Hands Community Food Pantry (1111 Industry Rd, Lawrenceburg, KY 40342) serves dinner every Tuesday and Thursday from 6-7 PM. All are welcome. Thank you to our dedicated volunteers who help to prepare and serve. And thank you to everyone for whom, without your donations we would not be able to participate in such a wonderful ministry.

Martha's Ministry helps our parishioners who are sick or have come home from the hospital and could use a home cooked meal and a visit from fellow parishioners from church. We can also bring communion and assist with community events such as dinner at the library. Please contact Sue Litkenhus to join this beautiful ministry.

Anderson United Are you interested in learning more about Anderson United? Check out our website: andersonunited.org or call Andrea Dull (256-337-6658) or Jeff Wedding (502-598-9507) **Volunteers:** All volunteer registration will be done on the website. Please register online. It is easy and quick. If you are unable to access the website, please let me know and I will register for you. Reach out to me if you have any questions. **Please note:** if you volunteer in an area not listed under volunteer options, complete the registration form and put in your volunteer area under the "other" volunteer option (medical, exit, registration, food cart, etc)



Scan to Connect to
Anderson United's Webpage

Donations:

Clothing: Please donate new underwear and socks and gently used clothing. The socks and underwear are especially needed and appreciated!

- **Food:** This year rather than ask for food donations at Walmart and Sav-a-lot, we are inviting our church members to donate to Anderson United to help pay for the food we need to purchase. We cannot provide the food we need for our Anderson United food pantry without these very important donations, and we do not want anyone to go away hungry. PLEASE consider donating if possible!

Monetary Donations:

- You can sponsor a foodbox or multiple food boxes at \$25/box on the website
- Or donate to the general fund through the website
- Or make a deposit directly into the AU account at any Commonwealth Credit Union

Thank you! Please pray for the success of the clinic. It is an amazing outreach effort and a beautiful way to bring God's love to people in Anderson County. Christ cured the sick and fed the hungry. In taking care of their pressing physical needs, Jesus opened their hearts to his love. We are called to do the same. Thank you for your generous help and support this year! Thank you for sharing your time, talent and treasure!

St. Lawrence Laudato Si

Solar Electric for St. Lawrence

Key points:

- The Diocese directed all parishes to look into solar energy with the goal of reaching net zero
- The St. Lawrence *Laudato Si* committee researched our options on solar energy and recommended we move forward
- The price for the project is around \$140,000
- With rebates and private donations, the worst-case scenario is that it will cost the parish \$12,845
- When the system is installed, our utility bills will decrease by around 50% or more considering the projected increase in energy prices.
- This will allow more funding for parish programs and evangelization
- There was consensus from both Parish Pastoral Council and the Finance Council, and approved by Fr. Steve, to move forward with the project
- Members of the committees will be available for questions after the Masses on Feb. 14th and 15th in Blandford Hall

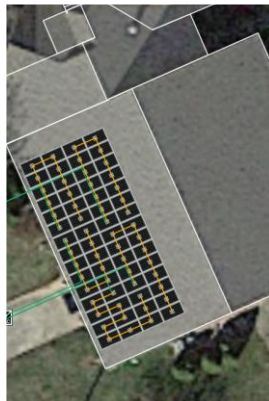
Background: As part of the Laudato Si effort to reach net zero (Net zero means cutting carbon emissions to a small amount of residual emissions that can be absorbed and durably stored by nature and other carbon dioxide removal measures, leaving zero added to the atmosphere.), the Diocese identified the use of alternative energy as one way to address our environmental impact on the earth. After evaluating available energy alternatives, the Diocese concluded that solar electric was the most feasible and cost effective. Every parish in the Diocese was asked to consider installing solar energy in their parish.

Why should our parish consider solar energy? Energy costs continue to go up. Once the panels are installed, we will see an immediate reduction in our electric bills (approximately 46% annually). **(current average electric bill is \$11,460 per year and should be reduced to \$5,244)** Our use of solar decreases the burden on the energy grid. If we install our panels before the end of the year, we are eligible for a sizeable government rebate. We have received a grant through the Diocese for \$10,000 to help defray the cost of installing solar energy. In addition, we have some parishioners who have donated to help underwrite the cost. Future generations will benefit. The money we save by lowering our energy bills is money we can use for our parish ministries. Solar energy is a clean energy source which is good for the atmosphere.

What we did: The Diocese forwarded St. Lawrence a proposal from a Lexington solar energy contractor for our consideration. Laudato Si committee went back to that contractor and asked for more complete proposals for all three of our buildings: the church, Gabriel Hall, and the rectory. In addition, we solicited proposals from a Louisville solar energy contractor who was selected by both *Solar over Louisville* and *Solar over Frankfort* in the past. After several iterations with each contractor and evaluating the best value for us, the committee recommended Pure Power Solar from Louisville. They are a family-owned business, with all workers directly employed by them, and no subcontractors. Additionally, all the equipment in their proposal qualifies as American made which

increases the government rebate to us. This recommendation was presented to the Pastoral Council and Finance Council. After much thought and prayer, both councils approved the recommendation to go forward with the installation of solar at St. Lawrence.

What will we get? The equipment consists of 106 Solar Panels with DC power optimizers and DC to AC Inverters to interface with the existing power panels in the three buildings. When installed the buildings will have arrays as depicted below:



Church



Rectory



Gabriel Hall

What will it cost?

Contract Price	\$138,911
Less Grant from Diocese	-\$10,000
Less-Donations	-\$75,000
Initial cost to Parish in 2026	\$53,911
Less Government Rebate	-\$41,066
Maximum cost to Parish	\$12,845

We welcome additional donations to help minimize the financial impact on the parish.

There will be presentations and discussions on the projects after Mass on February 13th and 14th for anyone who is interested.

St. Lawrence Community

This Week's Birthdays- Feb 9 - Jeff Wedding, Feb 11 – John Cheak

Our Fish Fry is right around the corner, and we're counting on the generosity and teamwork of our parish community to make it a success. If you're able to lend a hand, we would be grateful for your time and energy. We need volunteers for: Food prep and kitchen assistance, Serving and support, - clean up on Saturdays. Please contact the office for more information. Fish Fry begins on Feb 21st.

Dinner and a Movie is the 1st, 2nd, and 4th Wednesday of the month at 5 pm in the Family Life Center. Please contact Bill Pfalzer for more information or join the movie night group in Flocknote for communications.

Choir practice for the Easter Season will begin on Tuesday, February 3rd. Practice will be in the Church, following the 6 PM Mass. We would love to have new members. You do NOT need to know how to read music. Please come and enjoy the fun! Questions? Call Jane 859-576-6288

St Barnabus Committee meets on the second Tuesday of the month in Blandford Hall. We send cards and/or packages of small gifts to our students, military and those in religious vocational training, who are away from home, as a reminder that St Lawrence is keeping them in our thoughts and prayers. All are welcome to attend and help.

Ministry Committee Chairs

Pastoral Council	Robin Basham		Finance Council	Jim Martin
Liturgy	Deacon Frank Villalobos		Religious Education	Robin Basham
Sacristans	Robin Basham		Altar Servers	Deacon Frank Villalobos
EMOHC	Monty Collingsworth		Lectors	Sue Litkenhus
Greeters	Denis King		Altar Society	Cathy Figlestahler, Robin Basham
Homebound Ministry	John Casper		Funeral Coordinator	Pat Miller
Bible Study	Marcia Roark		Mowing Team	Bob Figlestahler
Open Hands Food Pantry	Andrea Dull, Lisa Cann		Hispanic Committee	Maria Gonzalez
Knights of Columbus	Johnny Benningfield		Women's Ministry	Diana Nichols & Donna House
Rosary Makers	Donna Nicolette		Laudato Si	Andrea Dull (interim)
Youth Group	Mike Armstrong		Outreach	Jim Martin, Andrea Dull
Martha's Ministry	Sue Litkenhus		Welcome Committee	Christine Buntain
St Barnabas	Carolyn Bond			

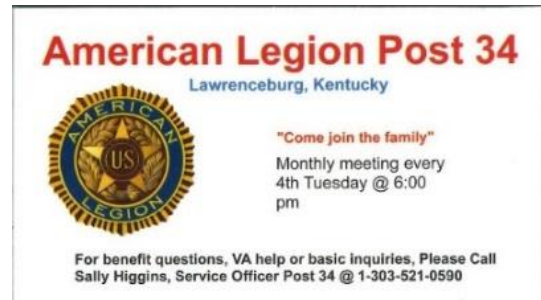
Diocese of Lexington

Job Opportunity Catholic Charities of Lexington is seeking a detail-oriented and tech-savvy Administrative Assistant to join our team. This role is essential to the smooth operation of our office, supporting leadership, staff, and programs through a wide range of administrative tasks.

The Diocesan High School Retreat March 13-15, at the Bluegrass Christian Camp, 7463 Athens Boonesboro Rd. Lexington KY. Enjoy fun and fellowship with other high schoolers from across the diocese. Every year youth tell us just how important this retreat has been in their walk with God. We all need to take time to unplug from the world to be with our Lord and encounter him in new ways; How much more important is it to give that chance to our high schoolers who are wrestling with some of the biggest questions in life. This year's theme will be "Encountering Christ". The cost will be \$75 per youth scholarships available.



St. Lawrence Appreciates



**St Lawrence
Council 15681**



*Kentucky's Oldest Water
Powered Commercial Flour Mill*
1-800-643-8678

Phillip Weisenberger
(859) 254-5282 (859) 254-0294 fax

545 Weisenberger Mill Rd
Midway, Kentucky 40347